

Crossings™

MICHAEL AMINI® | *kathy ireland*®

H O M E D E S I G N S

REDEFINING RUSTIC

CROSSINGS

With clean lines and warm rustic tones, Crossings is the image of casual strength. Gunmetal hardware adds a vein of industrial design to the countryside style and modern storage implements, offering a home furnishings collection that prioritizes convenient comfort.





Find the casual charm

you need, without sacrificing definition. Industrial pipe accents and warm rustic tones meet to create a bed guaranteed to complete any farmhouse interior.

Wood: Acacia | Veneer: Acacia | Finish: Reclaimed Barn |
Fabric: Beige



PANEL BED QUEEN

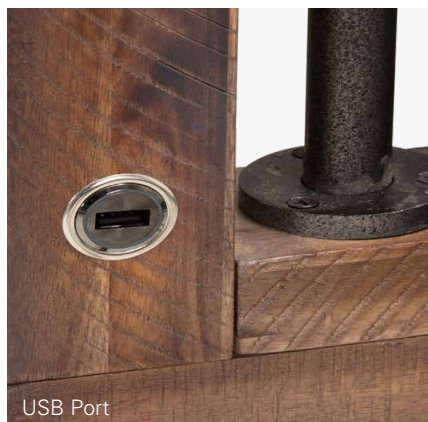
KI-CRSG012QN-217. 66"h x 64.75"w x 88.5"d

CAL KING

KI-CRSG014CK-217. 68"h x 80.75"w x 92.75"d

EASTERN KING

KI-CRSG014EK-217. 68"h x 80.75"w x 88.5"d



Need more storage?

The Crossings Bed lets you choose. Same bed, same stunning style, and more space for you!

Wood: Acacia | Veneer: Acacia | Finish: Reclaimed Barn



PANEL BED W/ DRAWERS QUEEN

KI-CRSG012QNDW-217. 66"h x 64.75"w x 90"d

CAL KING

KI-CRSG014CKDW-217. 68"h x 80.75"w x 91.25"d

EASTERN KING

KI-CRSG014EKDW-217. 68"h x 80.75"w x 90"d



Why choose average?

For guest beds and kids' rooms alike, the Crossings Twin Metal Bed channels vintage Americana details with a touch of modern industrial style.

Wood: Acacia | Veneer: Acacia | Finish: Reclaimed Barn



TWIN METAL BED

KI-CRSG713TW-818. 56.5"h x 39.5"w x 81.25"d



Versatility is King.

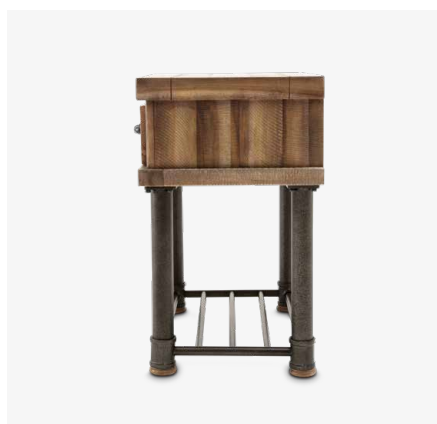
A side table that doubles as a nightstand lets you perfect your style and boost your rustic interior. What more can you ask for?

Wood: Acacia | Veneer: Acacia | Finish: Reclaimed Barn



SIDE TABLE WITH DRAWER

KI-CRSG040-217. 26.5"h x 24.25"w x 17.25"d





Rustic designs and

industrial details. The Crossings Nightstand was designed to make your casual style pop and add instant functionality to your bedside.

Wood: Acacia | Veneer: Acacia | Finish: Reclaimed Barn

NIGHTSTAND

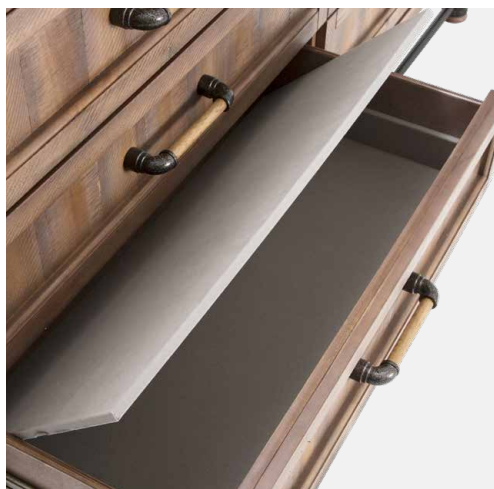
KI-CRSG042-217. 26"h x 24"w x 17.25"d



Home design like you

imagined. With the Crossings Dresser and Mirror set, get a mix of industrial accents, hidden storage, and a specialty cedar lining all in one!

Wood: Acacia | Veneer: Acacia | Finish: Reclaimed Barn



DRESSER

KI-CRSG050-217. 40"h x 68"w x 17.25"d

DRESSER MIRROR

KI-CRSG060-217. 46"h x 55"w x 2.5"d



mix & **MATCH**

LOOKS GOOD ANYWHERE.



Arrange your bedroom

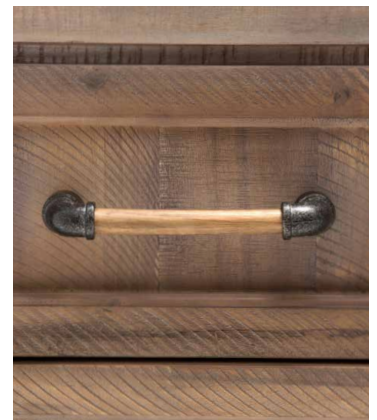
as you want! The Crossings Chest meets your bedroom needs with spacious storage, a cedar lined drawer, and a perfect place to add your newest rustic accents.

Wood: Acacia | Veneer: Acacia | Finish: Reclaimed Barn



6 DRAWER CHEST

KI-CRSG070-217. 56"h x 40"w x 16"d





bring
THE CHARM





Made for unique homes

only. Farmhouse with a touch of industrial design, The Crossings Dining Table works perfectly in urban spaces and country homes alike.

Wood: Acacia | Veneer: Acacia | Finish: Reclaimed Barn

RECTANGULAR DINING TABLE

KI-CRSG000-217. 31"h x 76"w x 42.25"d



Extend the possibilities with

this Crossings Table. Made for friends, family, and everyday living, this table has the space you've been looking for.

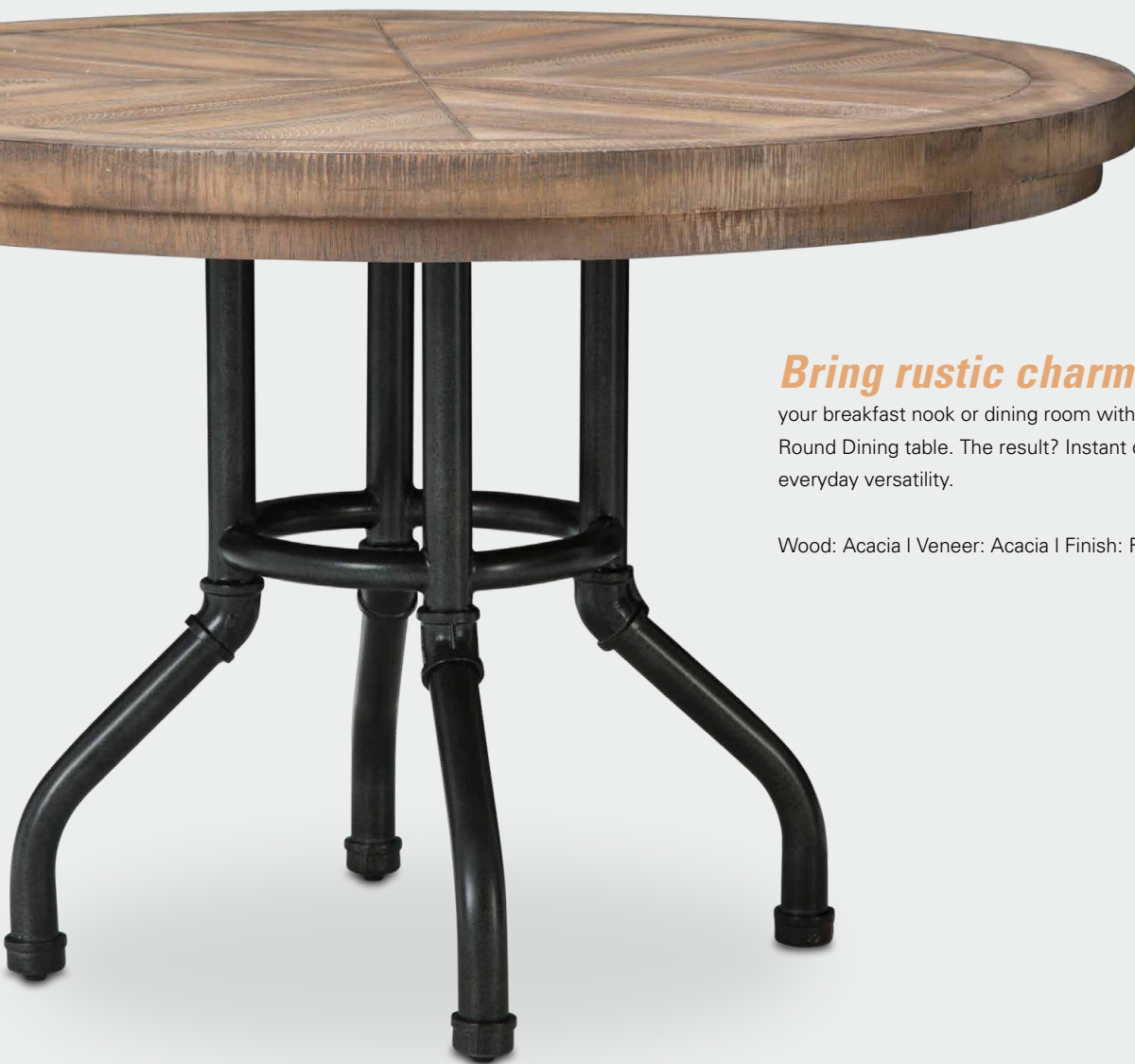
Wood: Acacia | Veneer: Acacia | Finish: Reclaimed Barn



4 LEG RECTANGULAR DINING TABLE - WITH LEAF (96")

KI-CRSG000EX-217. 30.75"h x 76"w x 42"d





Bring rustic charm to

your breakfast nook or dining room with the Crossings Round Dining table. The result? Instant definition and everyday versatility.

Wood: Acacia | Veneer: Acacia | Finish: Reclaimed Barn

ROUND DINING TABLE

KI-CRSG001-217. 30.5"h x 48"w x 48"d



Rustic elegance is found

here. The Crossings Side Chair is ready to match your farmhouse style with casual neutrals, nailhead trims, and a comfortable style you'll love forever.

Wood: Acacia | Veneer: Acacia | Finish: Reclaimed Barn | Fabric: Beige



SIDE CHAIR

KI-CRSG003-217. 39"h x 21"w x 26.5"d





Unique, eclectic, and rustic.

Mix it up with the Crossings Dining Bench and bring your curated and casual taste to the next level!

Wood: Acacia | Veneer: Acacia | Finish: Reclaimed Barn | Fabric: Beige

DINING BENCH

KI-CRSG900-217. 33.5"h x 51.75"w x 26"d



Decor for any setting.

The Crossings Wall Mirror looks perfect propped above a server or dresser, in a sitting room, or lighting up a hallway.

Wood: Acacia | Veneer: Acacia | Finish: Reclaimed Barn |
Glass: Beveled



SIDEBOARD MIRROR

KI-CRSG067-217. 42.5"h x 50.5"w x 1.75"d



SIDEBOARD

KI-CRSG007-217. 40"h x 68"w x 17.25"d



Store and serve the way

you want. With a relaxed farmhouse style, the Crossings Sideboard is ready to change everything about your mealtime, parties and holidays.

Wood: Acacia | Veneer: Acacia | Finish: Reclaimed Barn



up
NEXT

WATCH YOUR STYLE CHANGE.

Mountain lodge styles and

farmhouse looks meet with the Crossings TV Cabinet. This essential accent has the rustic charm and warm tones your living room needs!

Wood: Acacia | Veneer: Acacia | Finish: Reclaimed Barn



TV CABINET

KI-CRSG081-217. 26"h x 70"w x 17.25"d



a place for **EVERYONE**







Calm, casual and cool.

Define your living room look with the Crossings Sectional Set, made with soothing denim-blue tones and comfortable seating the whole family can enjoy.

Fabric: Heather Blue

SECTIONAL

KI-CRSG-SC5-MBL-000N 108"l x 108"d x 34"h



Get more than you expect!

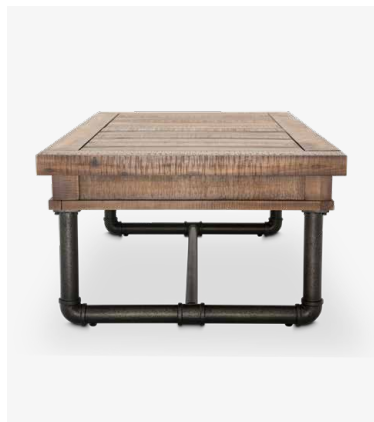
With the Crossings Cocktail Table, the secret is in the storage. Slide the tabletop open and never lose that remote again.

Wood: Acacia | Veneer: Acacia | Finish: Reclaimed Barn



RECTANGULAR COCKTAIL TABLE

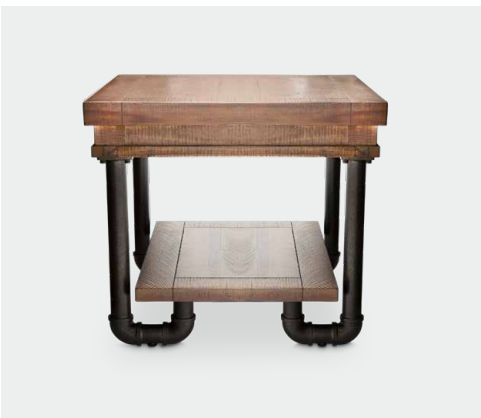
KI-CRSG201-217. 19"h x 52.25"w x 30"d





END TABLE

KI-CRSG202-217. 21.75"h x 24.25"w x 24.25"d



Make an industrial statement.

The Crossings End Table gives a new look to exposed pipes and rustic style. Don't ever settle for less.

Wood: Acacia | Veneer: Acacia | Finish: Reclaimed Barn



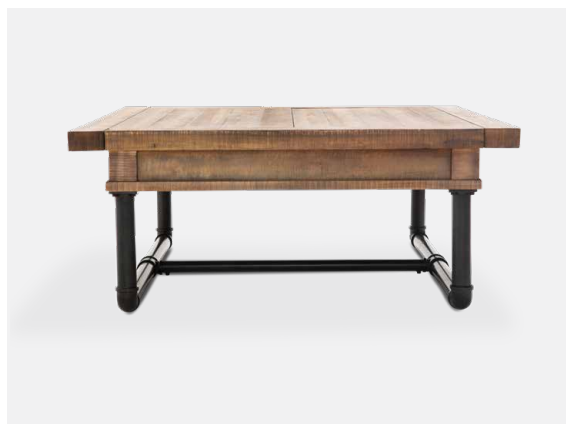
Don't sacrifice space.

The Crossings Square Cocktail Table gives you a rustic edge without overtaking your living room. Casual, unique, and beautiful.

Wood: Acacia | Veneer: Acacia | Finish: Reclaimed Barn

SQUARE COCKTAIL TABLE WITH STORAGE

KI-CRSG204-217. 18.5"h x 44"w x 44"d





CHAIR SIDE TABLE

KI-CRSG222-217. 28.5"h x 14.25"w x 26.75"d



Ready to stand out?

The Crossings Chair Side Table was made to catch attention and show off your eclectic casual style.

Wood: Acacia | Veneer: Acacia | Finish: Reclaimed Barn



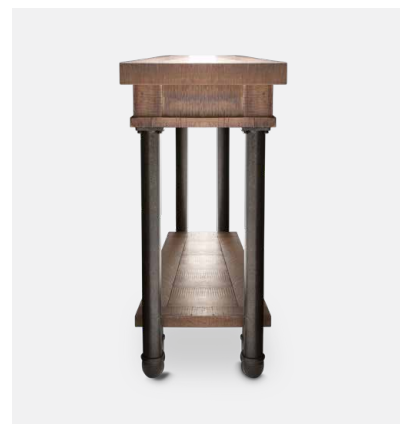
Accent your home instantly.

With the Crossings Console Table, you can highlight your hallways, entryways, and sitting rooms with a bold industrial look everyone will fall in love with.

Wood: Acacia | Veneer: Acacia | Finish: Reclaimed Barn

CONSOLE TABLE

KI-CRSG223-217. 31.75"h x 52.25"w x 14.25"d





get
ORGANIZED



Spread out your workspace

with the Crossings Writing Desk. Rustic with an industrial flair, this set is perfect for projects, writing, or business at home.

Wood: Acacia | Veneer: Acacia | Finish: Reclaimed Barn

WRITING DESK

KI-CRSG277-217. 30.75"h x 64.25"w x 27"d





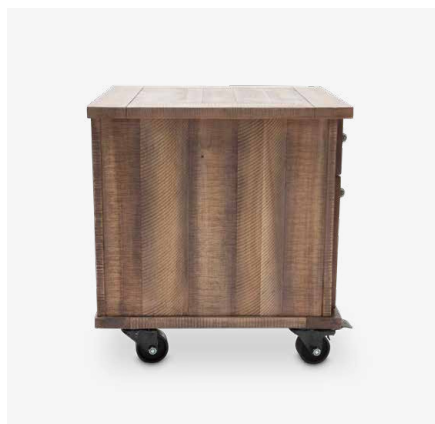
Customize your space

effortlessly. Compact and convenient cabinet space where you need, and farmhouse charm where you want!

Wood: Acacia | Veneer: Acacia | Finish: Reclaimed Barn

ROLLING FILE CABINET

KI-CRSG250-217. 23.25"h x 19.25"w x 22.25"d





A



B



C



D



E



F



G



H



I

- A. **Twin Metal Bed (2 pc) KI-CRSG713TW-818.** 56.5"h x 39.5"w x 81.25"d
- B. **Queen Panel Bed (3 pc) KI-CRSG012QN-217.** 66"h x 64.75"w x 88.5"d
Cal King Panel Bed (3 pc) KI-CRSG014CK-217. 68"h x 80.75"w x 92.75"d
Eastern King Panel Bed (3 pc) KI-CRSG014EK-217. 68"h x 80.75"w x 88.5"d
- C. **Queen Panel Bed w/ Drawers (4 pc) KI-CRSG012QNDW-217.** 66"h x 64.75"w x 90"d
Cal King Panel Bed w/ Drawers (4 pc) KI-CRSG014CKDW-217. 68"h x 80.75"w x 91.25"d
Eastern King Panel Bed w/ Drawers (4 pc) KI-CRSG014EKDW-217. 68"h x 80.75"w x 90"d
- D. **Side Table w/ Drawer KI-CRSG040-217.** 26.5"h x 24.25"w x 17.25"d
- E. **Nightstand KI-CRSG042-217.** 26"h x 24"w x 17.25"d
- F. **Dresser KI-CRSG050-217.** 40"h x 68"w x 17.25"d
Dresser Mirror KI-CRSG060-217. 46"h x 55"w x 2.5"d
- G. **6 Drawer Chest KI-CRSG070-217.** 56"h x 40"w x 16"d
- H. **Rectangular Dining Table KI-CRSG000-217.** 31"h x 76"w x 42.25"d
- I. **4 Leg Rectangular Dining Table - w/Leaf (96") KI-CRSG000EX-217.** 30.75"h x 76"w x 42"d



J



K



L



P



Q



R



V



W

J. **Round Dining Table** KI-CRSG001-217. 30.5"h x 48"w x 48"d

K. **Side Chair** KI-CRSG003-217. 39"h x 21"w x 26.5"d

L. **Dining Bench** KI-CRSG900-217. 33.5"h x 51.75"w x 26"d

M. **Sideboard** KI-CRSG007-217. 40"h x 68"w x 17.25"d

N **Sideboard Mirror** KI-CRSG067-217. 42.5"h x 50.5"w x 1.75"d

O. **TV Cabinet** KI-CRSG081-217. 26"h x 70"w x 17.25"d

P. **Sectional** KI-CRSG-SC5-MBL-000N. 108"l x 108"d x 34"h



M



N



O



S



T



U

- Q. **Rectangular Cocktail Table KI-CRSG201-217.** 19"h x 52.25"w x 30"d
 R. **End Table KI-CRSG202-217.** 21.75"h x 24.25"w x 24.25"d
 S. **Square Cocktail Table w/Storage KI-CRSG204-217.** 18.5"h x 44"w x 44"d
 T. **Chair Side Table KI-CRSG222-217.** 28.5"h x 14.25"w x 26.75"d
 U. **Console Table KI-CRSG223-217.** 31.75"h x 52.25"w x 14.25"d
 V. **Writing Desk KI-CRSG277-217.** 30.75"h x 64.25"w x 27"d
 W. **Rolling File Cabinet KI-CRSG250-217.** 23.25"h x 19.25"w x 22.25"d

Pages 4,5. **Addison White Duvet Set**
 7pc King. BCS-KD07-ADISN-WHT
 6pc Queen. BCS-QD06-ADISN-WHT

Pages 2,3,6. **Albany Gray Duvet Set**
 6pc King. BCS-KD06-ALBNY-GRY
 5pc Queen. BCS-QD05-ALBNY-GRY
 3pc Twin. BCS-TD03-ALBNY-GRY



MICHAEL AMINI® | *kathy ireland*®

H O M E D E S I G N S

CHANNELING THE HEART OF AMERICANA STYLE,
MICHAEL AMINI AND KATHY IRELAND CREATE LUXURY
HOME FURNISHINGS INSPIRED BY CASUAL, RELAXED LOOKS.

AMINI.COM

Contained herein are original designs that are protected by copyrights and/or design patents. The unauthorized reproduction of a copyrighted work is unlawful and subjects violators to substantial civil damages, criminal penalties, forfeiture of infringing goods, and payment of all litigation and attorney's fees. The penalties for unauthorized reproduction of a design-patented work include payment to the patent owner of damages and attorney's fees. Violations of copyrights and/or design patents can result in prosecution to the fullest extent permitted by law. Designs depicted are proprietary with AICO © All rights reserved. 0919



882945508281